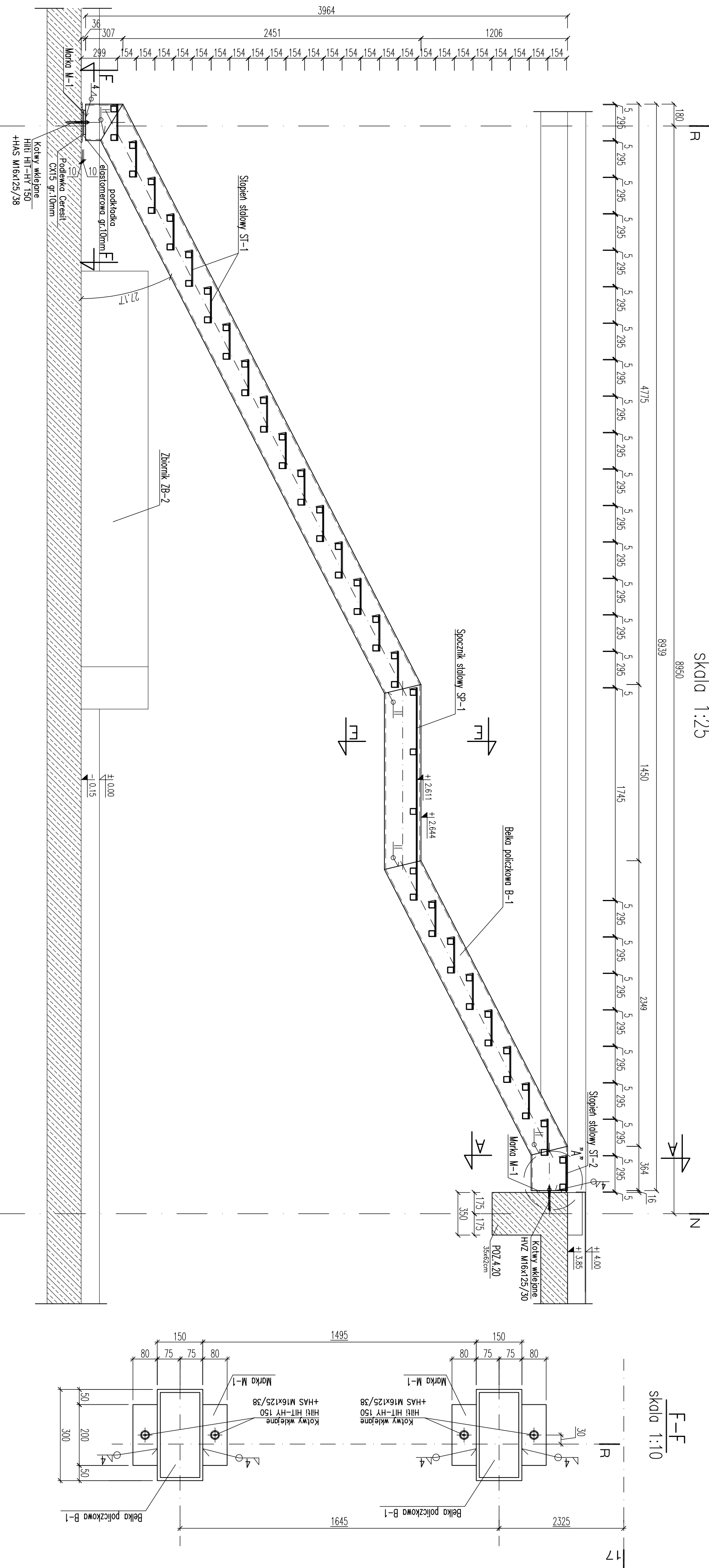


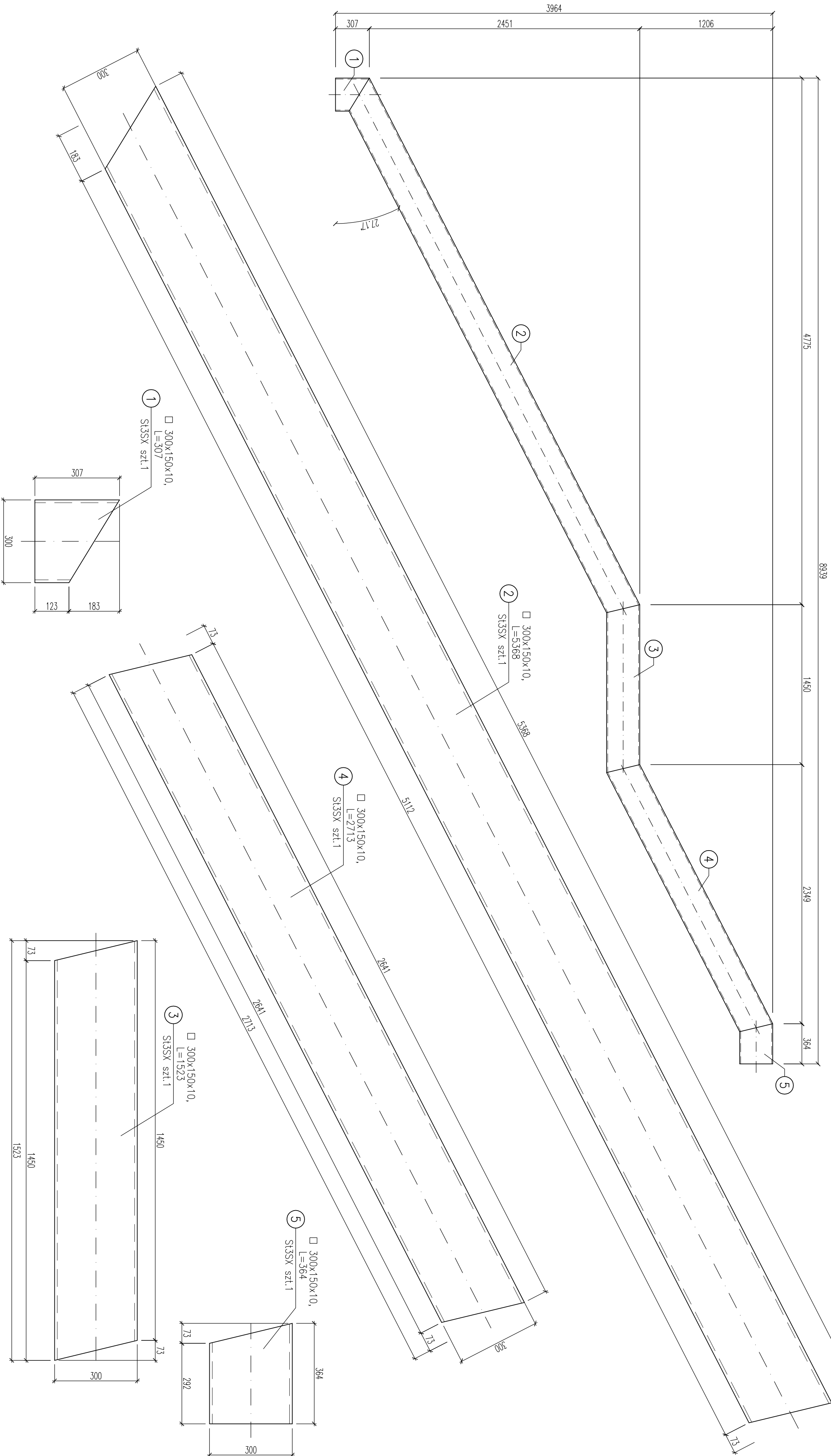
SCHODY STALOWE K-1

Skłó 1:25



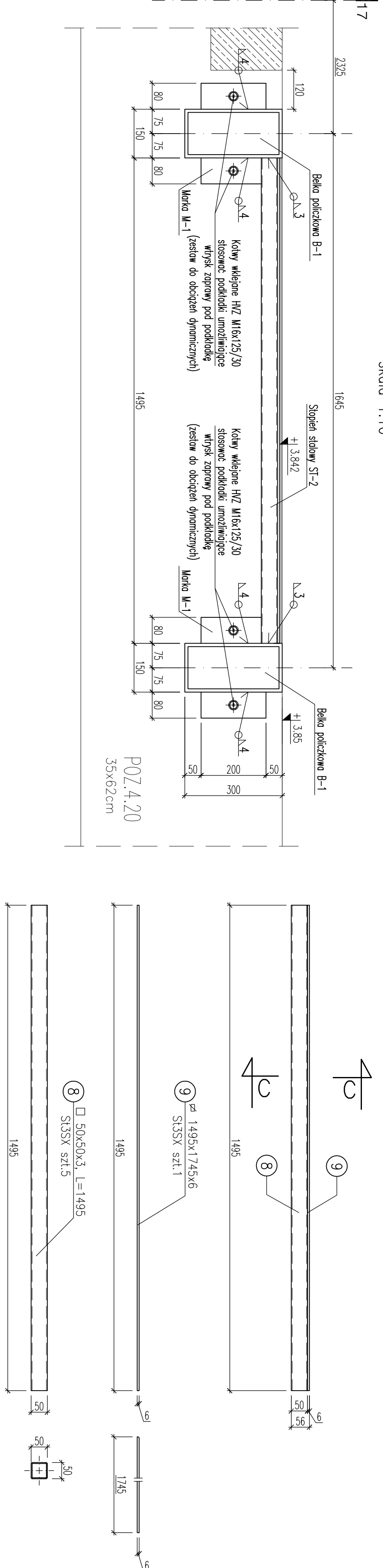
Belka póliczkowa B-1 szt.2

Skłó 1:25



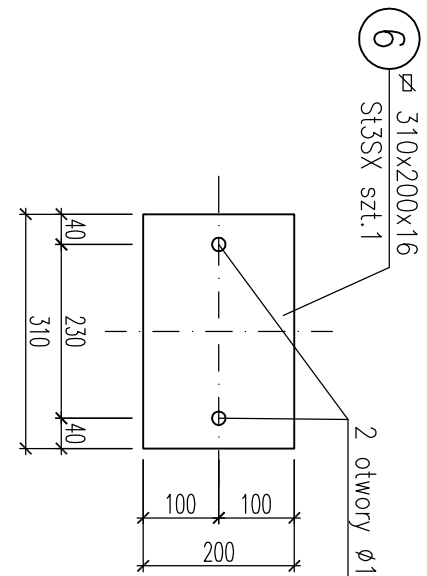
Spocznik stółowy SP-1 szt.1

Skłó 1:10



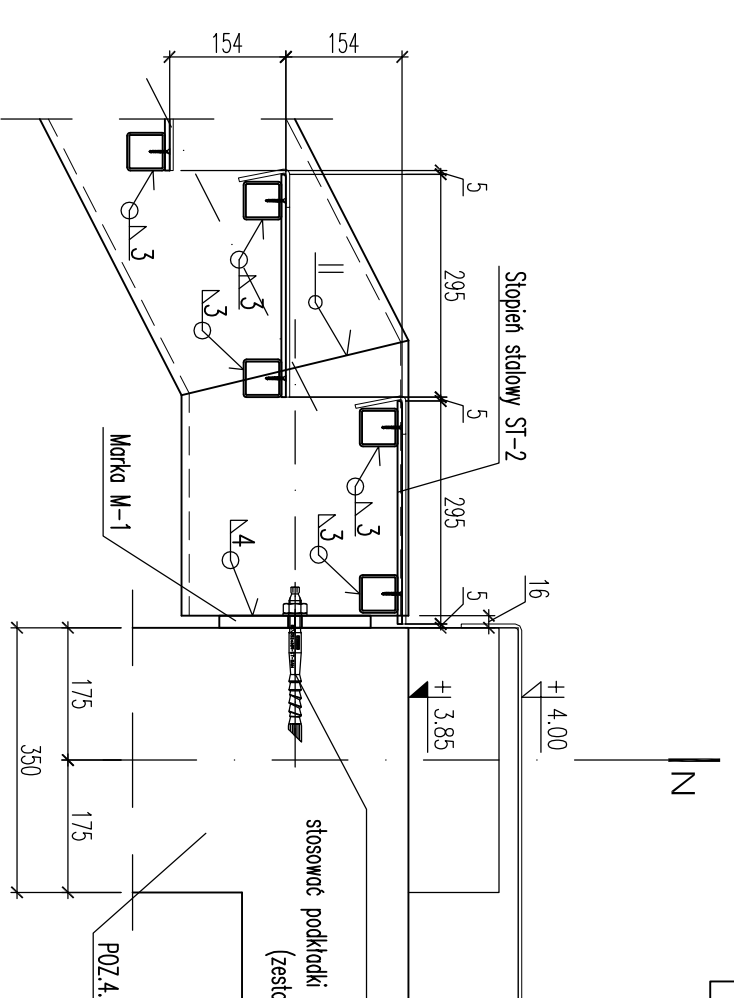
Marka M-1 szt.4

Skłó 1:10



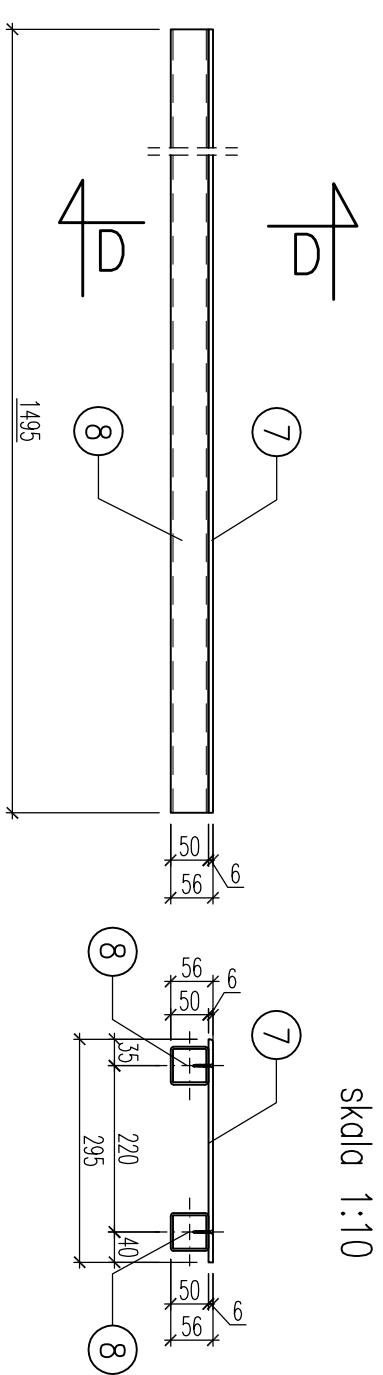
Szczegół "A"

Skłó 1:10



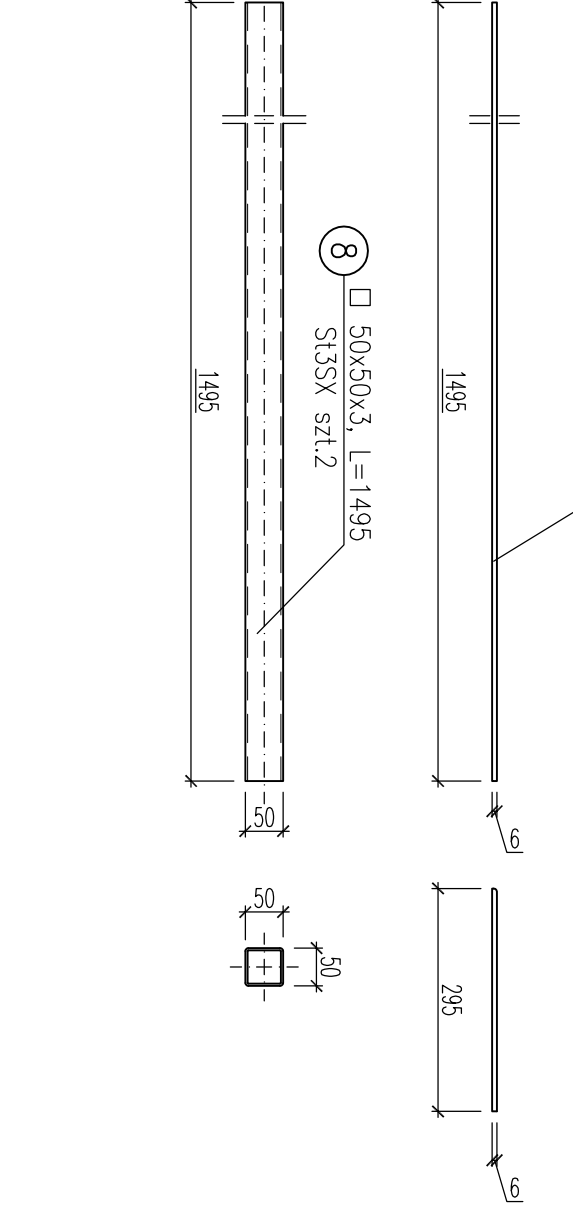
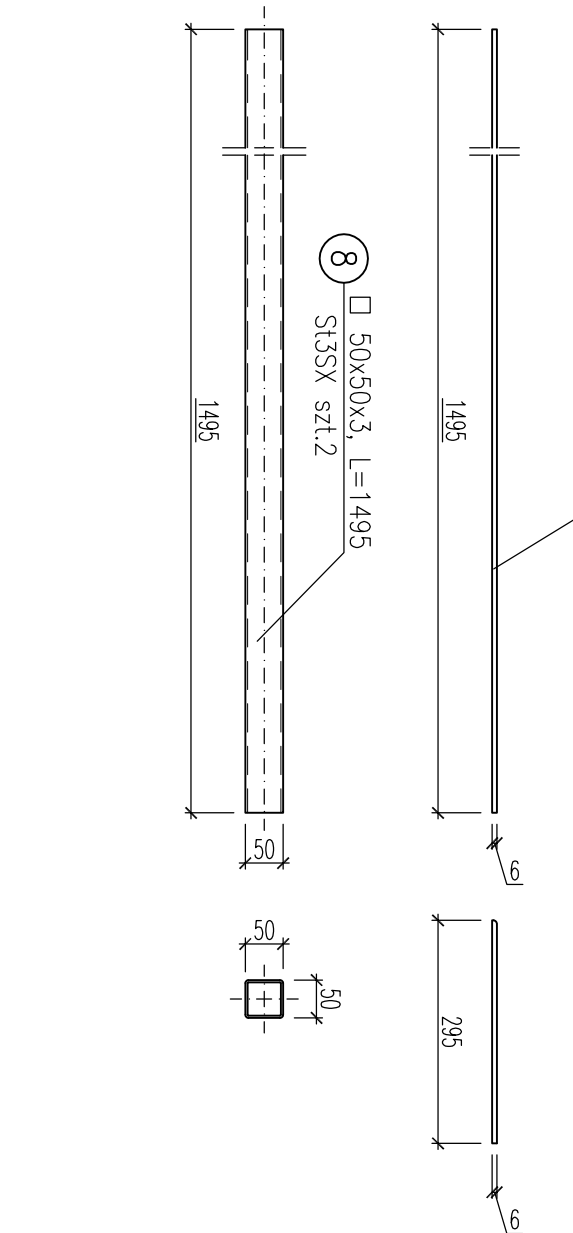
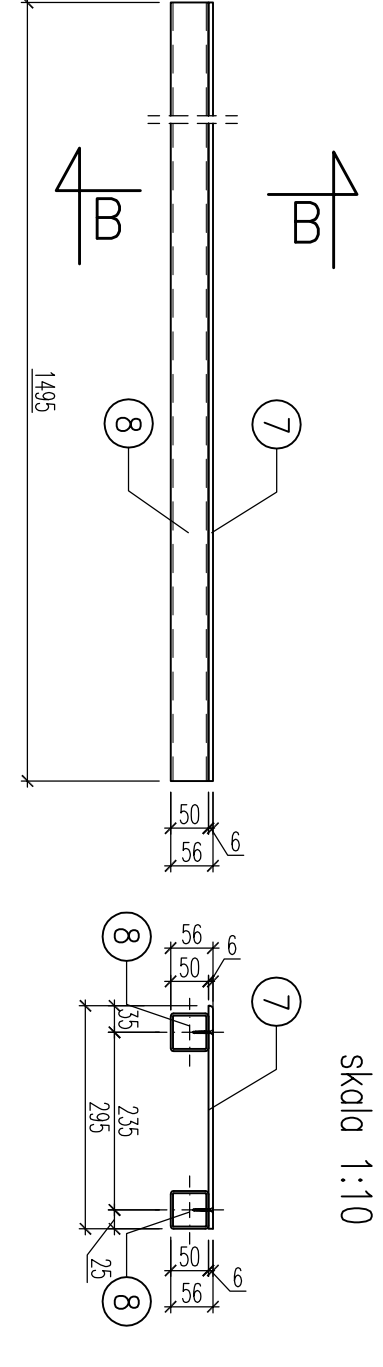
Stopień stółowy ST-2 szt.1

Skłó 1:10



Stopień stółowy ST-1 szt.23

Skłó 1:10



Lwóg:		1. Szczegóły mocowania belustród wg P.W. Architektury.	
2. Elementy do mocowania belustród wykonac w warsztacie przed cynkowaniem.		3. Do mocowania elementów stółowych zastosowano w stropie nad piwnicą zastosowano technikę kotwienia Hilti HIT-HI 150.	
4. Przy kotwieniu elementów stółowych do podłogi P02.4.20 zastosować kotew HIZ M16x125/30. Stosować podkładki umożliwiające wtyśk zaprawy pod podkładkę (zestów do obciążen dynamicznych).		5. Wszystkie elementy schodów ocynkowane ognioowo.	
6. Ze względu na cynkowanie ogniowe pozostawić otwory technologiczne.		Sol S155	
Elektrody EA1.46		Zestawienie stółi kształtowej nr11	
PROJEKT WYKONAWCZY			
CZĘŚĆ I			
KOMPLEKSU SPORTOWO-REKREACYJNEGO W LESKU			
PŁYWAŁNIA WRAZ Z ZAGOSPODAROWANIEM TERENU, DRÓG, PARKINGI, BOISKI I INFRASTRUKTURA TOWARZYSZĄCA			
1.165, 1.166, 1.167, 1.168, 1.169, 1.170, 1.171, 1.172, 1.173, 1.174, 1.175, 1.176, 1.177, 1.178, 1.179, 1.180, 1.181, 1.182, 1.183, 1.184, 1.185, 1.186, 1.187, 1.188, 1.189, 1.190, 1.191, 1.192, 1.193, 1.194, 1.195, 1.196, 1.197, 1.198, 1.199, 1.200, 1.201, 1.202, 1.203, 1.204, 1.205, 1.206, 1.207, 1.208, 1.209, 1.210, 1.211, 1.212, 1.213, 1.214, 1.215, 1.216, 1.217, 1.218, 1.219, 1.220, 1.221, 1.222, 1.223, 1.224, 1.225, 1.226, 1.227, 1.228, 1.229, 1.230, 1.231, 1.232, 1.233, 1.234, 1.235, 1.236, 1.237, 1.238, 1.239, 1.240, 1.241, 1.242, 1.243, 1.244, 1.245, 1.246, 1.247, 1.248, 1.249, 1.250, 1.251, 1.252, 1.253, 1.254, 1.255, 1.256, 1.257, 1.258, 1.259, 1.260, 1.261, 1.262, 1.263, 1.264, 1.265, 1.266, 1.267, 1.268, 1.269, 1.270, 1.271, 1.272, 1.273, 1.274, 1.275, 1.276, 1.277, 1.278, 1.279, 1.280, 1.281, 1.282, 1.283, 1.284, 1.285, 1.286, 1.287, 1.288, 1.289, 1.290, 1.291, 1.292, 1.293, 1.294, 1.295, 1.296, 1.297, 1.298, 1.299, 1.300, 1.301, 1.302, 1.303, 1.304, 1.305, 1.306, 1.307, 1.308, 1.309, 1.310, 1.311, 1.312, 1.313, 1.314, 1.315, 1.316, 1.317, 1.318, 1.319, 1.320, 1.321, 1.322, 1.323, 1.324, 1.325, 1.326, 1.327, 1.328, 1.329, 1.330, 1.331, 1.332, 1.333, 1.334, 1.335, 1.336, 1.337, 1.338, 1.339, 1.340, 1.341, 1.342, 1.343, 1.344, 1.345, 1.346, 1.347, 1.348, 1.349, 1.350, 1.351, 1.352, 1.353, 1.354, 1.355, 1.356, 1.357, 1.358, 1.359, 1.360, 1.361, 1.362, 1.363, 1.364, 1.365, 1.366, 1.367, 1.368, 1.369, 1.370, 1.371, 1.372, 1.373, 1.374, 1.375, 1.376, 1.377, 1.378, 1.379, 1.380, 1.381, 1.382, 1.383, 1.384, 1.385, 1.386, 1.387, 1.388, 1.389, 1.390, 1.391, 1.392, 1.393, 1.394, 1.395, 1.396, 1.397, 1.398, 1.399, 1.400, 1.401, 1.402, 1.403, 1.404, 1.405, 1.406, 1.407, 1.408, 1.409, 1.410, 1.411, 1.412, 1.413, 1.414, 1.415, 1.416, 1.417, 1.418, 1.419, 1.420, 1.421, 1.422, 1.423, 1.424, 1.425, 1.426, 1.427, 1.428, 1.429, 1.430, 1.431, 1.432, 1.433, 1.434, 1.435, 1.436, 1.437, 1.438, 1.439, 1.440, 1.441, 1.442, 1.443, 1.444, 1.445, 1.446, 1.447, 1.448, 1.449, 1.450, 1.451, 1.452, 1.453, 1.454, 1.455, 1.456, 1.457, 1.458, 1.459, 1.460, 1.461, 1.462, 1.463, 1.464, 1.465, 1.466, 1.467, 1.468, 1.469, 1.470, 1.471, 1.472, 1.473, 1.474, 1.475, 1.476, 1.477, 1.478, 1.479, 1.480, 1.481, 1.482, 1.483, 1.484, 1.485, 1.486, 1.487, 1.488, 1.489, 1.490, 1.491, 1.492, 1.493, 1.494, 1.495, 1.496, 1.497, 1.498, 1.499, 1.500, 1.501, 1.502, 1.503, 1.504, 1.505, 1.506, 1.507, 1.508, 1.509, 1.510, 1.511, 1.512, 1.513, 1.514, 1.515, 1.516, 1.517, 1.518, 1.519, 1.520, 1.521, 1.522, 1.523, 1.524, 1.525, 1.526, 1.527, 1.528, 1.529, 1.530, 1.531, 1.532, 1.533, 1.534, 1.535, 1.536, 1.537, 1.538, 1.539, 1.540, 1.541, 1.542, 1.543, 1.544, 1.545, 1.546, 1.547, 1.548, 1.549, 1.550, 1.551, 1.552, 1.553, 1.554, 1.555, 1.556, 1.557, 1.558, 1.559, 1.560, 1.561, 1.562, 1.563, 1.564, 1.565, 1.566, 1.567, 1.568, 1.569, 1.570, 1.571, 1.572, 1.573, 1.574, 1.575, 1.576, 1.577, 1.578, 1.579, 1.580, 1.581, 1.582, 1.583, 1.584, 1.585, 1.586, 1.587, 1.588, 1.589, 1.590, 1.591, 1.592, 1.593, 1.594, 1.595, 1.596, 1.597, 1.598, 1.599, 1.600, 1.601, 1.602, 1.603, 1.604, 1.605, 1.606, 1.607, 1.608, 1.609, 1.610, 1.611, 1.612, 1.613, 1.614, 1.615, 1.616, 1.617, 1.618, 1.619, 1.620, 1.621, 1.622, 1.623, 1.624, 1.625, 1.626, 1.627, 1.628, 1.629, 1.630, 1.631, 1.632, 1.633, 1.634, 1.635, 1.636, 1.637, 1.638, 1.639, 1.640, 1.641, 1.642, 1.643, 1.644, 1.645, 1.646, 1.647, 1.648, 1.649, 1.650, 1.651, 1.652, 1.653, 1.654, 1.655, 1.656, 1.657, 1.658, 1.659, 1.660, 1.661, 1.662, 1.663, 1.664, 1.665, 1.666, 1.667, 1.668, 1.669, 1.670, 1.671, 1.672, 1.673, 1.674, 1.675, 1.676, 1.677, 1.678, 1.679, 1.680, 1.681, 1.682, 1.683, 1.684, 1.685, 1.686, 1.687, 1.688, 1.689, 1.690, 1.691, 1.692, 1.693, 1.694, 1.695, 1.696, 1.697, 1.698, 1.699, 1.700, 1.701, 1.702, 1.703, 1.704, 1.705, 1.706, 1.707, 1.708, 1.709, 1.710, 1.711, 1.712, 1.713, 1.714, 1.715, 1.716, 1.717, 1.718, 1.719, 1.720, 1.721, 1.722, 1.723, 1.724, 1.725, 1.726, 1.727, 1.728, 1.729, 1.730, 1.731, 1.732, 1.733, 1.734, 1.735, 1.736, 1.737, 1.738, 1.739, 1.740, 1.741, 1.742, 1.743, 1.744, 1.745, 1.746, 1.747, 1.748, 1.749, 1.750, 1.751, 1.752, 1.753, 1.754, 1.755, 1.756, 1.757, 1.758, 1.759, 1.760, 1.761, 1.762, 1.763, 1.764, 1.765, 1.766, 1.767, 1.768, 1.769, 1.770, 1.771, 1.772, 1.773, 1.774, 1.775, 1.776, 1.777, 1.778, 1.779, 1.780, 1.781, 1.782, 1.783, 1.784, 1.785, 1.786, 1.787, 1.788, 1.789, 1.790, 1.791, 1.792, 1.793, 1.794, 1.795, 1.796, 1.797, 1.798, 1.799, 1.800, 1.801, 1.802, 1.803, 1.804, 1.805, 1.806, 1.807, 1.808, 1.809, 1.810, 1.811, 1.812, 1.813, 1.814, 1.815, 1.816, 1.817, 1.818, 1.819, 1.820, 1.821, 1.822, 1.823, 1.824, 1.825, 1.826, 1.827, 1.828, 1.829, 1.830, 1.831, 1.832, 1.833, 1.834, 1.835, 1.836, 1.837, 1.838, 1.839, 1.840, 1.841, 1.842, 1.843, 1.844, 1.845, 1.846, 1.847, 1.848, 1.849, 1.850, 1.851, 1.852, 1.853, 1.854, 1.855, 1.856, 1.857, 1.858, 1.859, 1.860, 1.861, 1.862, 1.863, 1.864, 1.865, 1.866, 1.867, 1.868, 1.869, 1.870, 1.871, 1.872, 1.873, 1.874, 1.875, 1.876, 1.877, 1.878, 1.879, 1.880, 1.881, 1.882, 1.883, 1.884, 1.885, 1.886, 1.887, 1.888, 1.889, 1.890, 1.891, 1.892, 1.893, 1.894, 1.895, 1.896, 1.897, 1.898, 1.899, 1.900, 1.901, 1.902, 1.903, 1.904, 1.905, 1.906, 1.907, 1.908, 1.909, 1.910, 1.911, 1.912, 1.913, 1.914, 1.915, 1.916, 1.917, 1.918, 1.919, 1.920, 1.921, 1.922, 1.923, 1.924, 1.925, 1.926, 1.927, 1.928, 1.929, 1.930, 1.931, 1.932, 1.933, 1.934, 1.935, 1.936, 1.937, 1.938, 1.939, 1.940, 1.941, 1.942, 1.943, 1.944, 1.945, 1.946, 1.947, 1.948, 1.949, 1.950, 1.951, 1.952, 1.953, 1.954, 1.955, 1.956, 1.957, 1.958, 1.959, 1.960, 1.961, 1.962, 1.963, 1.964, 1.965, 1.966, 1.967, 1.968, 1.969, 1.970, 1.971, 1.972, 1.973, 1.974, 1.975, 1.976, 1.977, 1.978, 1.979, 1.980, 1.981, 1.982, 1.983, 1.984, 1.985, 1.986, 1.987, 1.988, 1.989, 1.990, 1.991, 1.992, 1.993, 1.994, 1.995, 1.996, 1.997, 1.998, 1.999, 2.000			
TOM III			
KONSTRUKCJA BUDYNKU			
ZESZYTY I			
PŁYWAŁNIA			
K-166			
SCHODY STALOWE K-1			